

**2009 GYMNASTICS
CHAMPIONSHIPS**
NATIONAL COLLEGIATE • MINNEAPOLIS



University of Minnesota
April 16-18, 2009

2009 NCAA National Collegiate Men's Gymnastics Championships

Participant Manual



2009 Men's Gymnastics Championships
April 16-18 – University of Minnesota



March 11, 2009

NCAA National Collegiate Men's Gymnastics Championship Participants:

On behalf of the University of Minnesota and the entire Twin Cities Community, welcome to Minneapolis-St. Paul and the 2009 NCAA National Collegiate Men's Gymnastics Championships. We are proud to have you as our guests and hope you enjoy your time on our campus and in the Twin Cities. The information included in the enclosed manual will assist you in your preparation for the Championships.

The Department of Intercollegiate Athletics here at the University of Minnesota has great expertise in conducting NCAA championships and will assure an excellent competitive environment and experience. Our staff is prepared to handle all of your needs from the moment you arrive in the Twin Cities.

If you have any questions, please feel free to contact Championship Director, Marc Ryan (612.625.2377, ryanx011@umn.edu), or Assistant Championship Director, Tyson Bjorklund (612.626.0994, bjor0264@umn.edu).

Once again, we hope you enjoy your stay in the Twin Cities and wish you the best of luck.

Sincerely,

Joel Maturi
Director of Athletics
University of Minnesota





Table of Contents

Championship Personnel	4
Schedule of Events	5
Rotations	6
Awards	8
Banquet	8
March-In	9
Meetings	9
Headquarters Hotel	9
Locker Rooms	10
Tickets	10
Sports Medicine	11
Credentials	12
Media/News Conferences	12
Hospitality	12
Equipment	13
Laundry Services	13
Corrals/Designated Team Areas	13
Drug Testing	13
Floor Layout	14
Sports Pavilion/Williams Arena Maps	15
Directions to Radisson University Hotel from the Airport	19
Walkway Map	20
Restaurants near the University of Minnesota	21
Movie Theatres	22
Shopping Centers	22
Transportation	23
Team Travel Form (due April 8)	24
Official Travel Party (due April 8)	25
March-In Order Form (due April 8)	26
Banquet Reservation Form (due April 8)	27





Championship Personnel

Director of Athletics

Joel Maturi
Direct: 612.625.0790
Fax: 612.626.7859
maturi@umn.edu

NCAA Championships Manager

Maisha Palmer
Cell: 317.614.5626
mpalmer@ncaa.org

Championship Director

Marc Ryan
Direct: 612.625.2377
Cell: 612.875.4872
Fax: 612.626.7859
ryanx011@umn.edu

Assistant Championship Director

Tyson Bjorklund
Direct: 612.626.0994
Cell: 651.485.0268
Fax: 612.626.7859
bjor0264@umn.edu

Drug Testing

Emily Whitten
Direct: 612.625.2850
Cell: 719.641.2168
whitt106@umn.edu

Event Management

Megan Appell
Direct: 612.626.5105
Cell: 920.915.3575
appe0048@umn.edu

Facility Manager

Mike Dale
Direct: 612.625.3007
Cell: 612.490.7616
dale0099@umn.edu

Floor Managers

Frank Ticknor
Direct: 612.373.6416
Cell: 651.428.5300
Frank_Ticknor@URSCorp.com

Jake Lee
Cell: 801.318.2681
leex1701@umn.edu

Judges' Liaison

Brian Meeker
Direct: 612.377.5863
Cell: 612.210.5503
bbmeeker@msn.com

Marketing

Kellan White
Direct: 612.626.8685
Cell: 919.260.0044
whit1328@umn.edu

Media Coordinators

Garry Bowman
Direct: 612.624.7345
Cell: 612.875.0154
Fax: 612.625.0359
gbowman@umn.edu

Sara Berhow
Direct: 612.625.5560
Cell: 612.253.9923
Fax: 612.625.0359
berho002@umn.edu

Sports Medicine

Jenn Novak
Direct: 612.625.2850
Cell: 612.202.9416
novak207@umn.edu

Ticket Manager

Ron Lynch
Direct: 612.625.0349
Cell: 612.490.7817
lynch033@umn.edu





Schedule of Events

** All times listed - Central Standard Time

Monday, April 13	2:00 – 7:30 p.m.	The Sports Pavilion will be available for scheduled practices. Please note the specific practice time desired on the Team Travel Form (page 24). (Practices must be confirmed with Mike Dale, 612.625.3007 or dale0099@umn.edu , by Wednesday, April 8).
.....		
Tuesday, April 14	9:00 – 8:00 p.m.	The Sports Pavilion will be available for scheduled practices. Please note the specific practice time desired on the Team Travel Form (page 24). (Practices must be confirmed with Mike Dale, 612.625.3007 or dale0099@umn.edu , by Wednesday, April 8).
.....		
Wednesday, April 15	9:00 a.m. 11:00 a.m. – 2:00 p.m. 2:00 – 5:00 p.m. 6:30 p.m.	Pre-Championship Meeting – (Sports Pavilion Club Room) Practice – Session I Practice – Session II NCAA Banquet, including CGA award presentations (Radisson University Ballroom)
.....		
Thursday, April 16	9:00 – 10:20 a.m. 10:20 – 11:29 a.m. 11:30 a.m. – 12:46 p.m. 1:00 p.m. 4:20 – 5:29 p.m. 5:30 – 6:46 p.m. 7:00 p.m.	Open Practice Session I Open Warm-up Session I Controlled Warm-up Session I (National Qualifier) Session II Open Warm-up Session II Controlled Warm-up Session II (National Qualifier)
.....		
Friday, April 17	9:00 a.m. 10:00 – 11:30 a.m. 11:30 a.m. – 3:00 p.m. 4:00 – 5:14 p.m. 5:15 – 6:45 p.m. 7:00 p.m.	Coaches Meeting/CGA (Sports Pavilion Club Room) Open Practice Region IV Regional Championships (Capital Cup Warm-Up Gym) Session III Open Warm-up Session III Controlled Warm-up Session III (Team & All-Around Finals)
.....		
Saturday, April 18	10:00 – 11:30 a.m. 11:30 a.m. – 4:00 p.m. 5:30 – 6:50 p.m. 7:00 p.m.	Open Practice Region IV Regional Championships (Capital Cup Warm-Up Gym) Session IV Open Warm-up Session IV (Individual Event Finals)





Rotations

Session I, Warm-Up Rotation (National Qualifier)

Rotation	Start	End	FE	Bye	PH	R	V	PB	HB
1	11:30	11:40	D	E	F	3R3AA	A	B	C
2	11:41	11:51	C	D	E	F	3V3AA	A	B
3	11:52	12:02	B	C	D	E	F	3PB3AA	A
4	12:03	12:13	A	B	C	D	E	F	3HB3AA
5	12:14	12:24	3FE3AA	A	B	C	D	E	F
6	12:25	12:35	F	Ind&AA	A	B	C	D	E
7	12:36	12:46	E	F	3PH3AA	A	B	C	D

Session I, Competition Rotation

Rotation	FE	Bye	PH	R	V	PB	HB
1	E	F	3PH3AA	A	B	C	D
2	D	E	F	3R3AA	A	B	C
3	C	D	E	F	3V3AA	A	B
4	B	C	D	E	F	3PB3AA	A
5	A	B	C	D	E	F	3HB3AA
6	3FE3AA	A	B	C	D	E	F
7	F	Ind&AA	A	B	C	D	E

Session II, Warm-Up Rotation (National Qualifier)

Rotation	Start	End	FE	Bye	PH	R	V	PB	HB
1	5:30	5:40	D	E	F	3R3AA	A	B	C
2	5:41	5:51	C	D	E	F	3V3AA	A	B
3	5:52	6:02	B	C	D	E	F	3PB3AA	A
4	6:03	6:13	A	B	C	D	E	F	3HB3AA
5	6:14	6:24	3FE3AA	A	B	C	D	E	F
6	6:25	6:35	F	Ind&AA	A	B	C	D	E
7	6:36	6:46	E	F	3PH3AA	A	B	C	D

Session II, Competition Rotation

Rotation	FE	Bye	PH	R	V	PB	HB
1	E	F	3PH3AA	A	B	C	D
2	D	E	F	3R3AA	A	B	C
3	C	D	E	F	3V3AA	A	B
4	B	C	D	E	F	3PB3AA	A
5	A	B	C	D	E	F	3HB3AA
6	3FE3AA	A	B	C	D	E	F
7	F	Ind&AA	A	B	C	D	E





Session III, Warm-Up Rotation (Team & All-Around Finals)

Rotation	Start	End	FE	Bye	PH	R	V	PB	HB
1	5:15	5:27	D	E	F	6R	A	B	C
2	5:28	5:40	C	D	E	F	6V	A	B
3	5:41	5:53	B	C	D	E	F	6PB	A
4	5:54	6:06	A	B	C	D	E	F	6HB
5	6:07	6:19	6FE	A	B	C	D	E	F
6	6:20	6:32	F	6Ind	A	B	C	D	E
7	6:33	6:45	E	F	6PH	A	B	C	D

Session III, Competition Rotation

Rotation	FE	Bye	PH	R	V	PB	HB
1	E	F	3PH3AA	A	B	C	D
2	D	E	F	3R3AA	A	B	C
3	C	D	E	F	3V3AA	A	B
4	B	C	D	E	F	3PB3AA	A
5	A	B	C	D	E	F	3HB3AA
6	3FE3AA	A	B	C	D	E	F
7	F	Ind&AA	A	B	C	D	E





Awards

Official NCAA awards will be presented to the members of the first four teams and to the first eight place-finishers in the individual events. First-, second-, third- and fourth-place team trophies will be awarded. Participation awards will be provided to all student-athletes competing (or in uniform) in the national championships and who do not receive a team or individual award. These awards will be sent to the institution's director of athletics after the conclusion of the competition. The following number of awards will be given: Trophies for the top four teams (14 individual awards for each of the four teams); awards to the top eight place-finishers on each of the six individual events, and awards to the top eight all-around competitors.

Ties in the team, all-around and individual competition at the national championships will not be broken. The NCAA national office will order duplicate awards. The all-around and team awards will be presented after Session III. The individual event awards will be presented at the conclusion of each group (floor exercise, pommel horse and rings) (vault, parallel bars, horizontal bar) of events during Session IV

Banquet

The 2009 NCAA National Collegiate Men's Gymnastics Championships Banquet, which will include the Nissen-Emery and CGA award presentation(s), will be held in the Radisson University Ballroom at **6:30 p.m. on Wednesday, April 15**. The Ballroom is located on the second level of the Radisson University Hotel. Each participating institution must complete the Banquet Reservation Form (page 27). The cost of the banquet is \$25 per person. Payment must be received prior to the start of the banquet. Payment will be collected at the Pre-Championship Meeting on Wednesday morning, or you may send payment to:

Bierman Field Athletic Building
c/o Tyson Bjorklund
516 15th Ave SE
Minneapolis, MN 55126

*** Make checks payable to the University of Minnesota*

The Banquet Reservation Form must be received by 5:00 p.m. (CST) on Wednesday, April 8. For friends and family planning to attend the banquet, please have them RSVP to Tyson Bjorklund (bjor0264@umn.edu or 612-626-0994) no later than Wednesday, April 8th. *** There is limited seating available so we encourage family/friends to RSVP ASAP.*





March-In

Prior to each session, a march-in ceremony will occur. The march-in staging area is located off the east end of the competition floor. Please see page 16 for the location of the staging area.

Judges march in first and are announced in event order. Teams will march in and line up in alphabetical order by institution, followed by the all-around competitors and event specialists. Please fill out the march-in order form, page 26, and return to Tyson Bjorklund (bjor0264@umn.edu or 612.626.7859 fax) by **5:00 p.m. (CST) on Wednesday, April 8.**

Meetings

The Pre-Championship Administrative Meeting will take place at **9:00 a.m. on Wednesday, April 15 in the Sports Pavilion Club Room.** It is mandatory for every head coach to be in attendance. Please see page 17 for the location of the Sports Pavilion Club Room.

The Coaches/CGA Meeting will take place at **9:00 a.m. on Friday, April 17 in the Sports Pavilion Club Room.** Please see page 18 for the location of the Sports Pavilion Club Room.

Headquarters Hotel

The Radisson University will serve as the headquarters hotel for the 2009 NCAA Men's Gymnastics Championship.

**Radisson University Hotel
615 Washington Avenue S.E.
Minneapolis, MN 55414
612.379.8888 (phone)
612.379.8682 (fax)**

Each institution is responsible for contacting the hotel directly for room reservations as well as for special arrangements for meeting rooms, meals, and other functions. If you need more information regarding the Headquarters Hotel, please contact Sales Manager Jessica Dietel at 612.362.6629 or jessica.dietel@radisson.com.

Directions to the Radisson University Hotel from MSP International Airport can be found on page 19.





Locker Rooms

Six comparable locker rooms are located in the Sports Pavilion/Williams Arena. Please see pages 15 & 16 for a map of the locker rooms.

	<u>Session I</u>	<u>Session II</u>
Locker Room #1 – P167	Team A	Team A
Locker Room #2 – P155	Team B	Team B
Locker Room #3 – P88	Team C	Team C
Locker Room #4 – P60	Team D	Team D
Locker Room #5 – P56	Team E	Team E
Locker Room #6 – W48	Team F	Team F

Tickets

Ticket Prices:

- All-Session Adult - \$35.00
- All-Session Student - \$25.00
- Single Session Adult - \$15.00
- Single Session Student - \$8.00

All seats are general admission. Each participating institution will have the opportunity to purchase tickets. **Ticket Manager Ron Lynch, 612.625.0349**, will send out a purchase order form prior to the competition. The player-guest ticket entrance will be located in the main Sports Pavilion Ticket Entrance (far west end). Please contact Ron Lynch with any questions.





Sports Medicine

Listed below is information regarding athletic training and medical service information that will be available during the championships.

The main full-service athletic training room is located on the lower level of the Sports Pavilion, Room P-68. There will also be a satellite athletic training room set up directly off the competition floor. The athletic training room will be open approximately one hour before each practice session and approximately two hours before each competition.

The following items will be available to each participating team during the championship:

- Ice, Ice Bags and Flexi-wrap
- Electrical Stimulation and Ultrasound
- Hydrocollator Heat Packs
- First Aid/Biohazard Supplies
- Towels
- Water

A Certified Athletic Trainer will be on-site during all practice sessions and competitions.

A Sports Medicine Family Physician and/or Orthopedic Physician will be on-call during the practice sessions and on-site for the competitions.

Emergency Medical Services (EMS) will be on-call for the practice sessions and on-site for the competitions.

Head/spine trauma injuries will be transported to the Hennepin County Medical Center (HCMC) – a Level 1 Trauma Center.

Hennepin County Medical Center

701 Park Ave
 Minneapolis, MN 55415
 General Information: (612) 347-2121
 Emergency Room: (612) 347-3131
 Patient Information: (612) 873-3400

All other emergency care will be referred to one of the two Fairview University Medical Center locations; Fairview-University or Fairview-Riverside. Should an emergency arise, directions will be provided.

Fairview-University Hospital:

500 Harvard Street SE
 Minneapolis, MN 55454
 General Information (612) 273-3000
 Emergency Room (612) 273-2700
 X-Ray/Radiology (612) 273-6004
 Admissions (612) 273-6685

Fairview-Riverside Hospital:

2450 Riverside Ave
 Minneapolis, MN 55455
 General Information (612) 672-6000
 Emergency Room (612) 273-6402
 X-Rays/ Radiology (612) 273-4250
 Admissions (612) 672-4360

If you will not be traveling a Certified Athletic Trainer, please arrange in advance with the Championship Sports Medicine Contact. Written treatment instructions must accompany student-athletes without an athletic trainer.

Sports Medicine Contact:

Jenn Novak, MS, ATC
 Office: 612.625.2850
 Cell: 612.202.9416
 novak207@umn.edu





Credentials

Each team may designate a maximum of 20 individuals to receive credentials. A maximum of 12 credentials may be designated for gymnasts. Six of the remaining eight credentials may be designated for non-participants. The remaining two credentials may be requested for university administration (i.e. Director of Athletics, University President, etc.).

Additionally, six floor access only credentials may be requested. These credentials are only valid during open warm-up and do not provide entry to the facility. A ticket is also required with floor access only credentials.

Please complete the Championships Entry Form on page 25 and return to Tyson Bjorklund (bjor0264@umn.edu or 612.626.7859 fax) by **5:00 p.m. (CST) on Wednesday, April 8.**

Squad Size:

Teams – maximum of 12 participants and a maximum of six gymnasts per event

Travel Party:

1-3 individuals qualified will be reimbursed for two non-athletes
4-6 individuals qualified will be reimbursed for three non-athletes
7-9 individuals qualified will be reimbursed for four non-athletes
Each team qualified will be reimbursed for five non-athletes

Media/News Conferences

Garry Bowman will serve as the media coordinator for the Championships. Any media members requesting a credential must contact Garry directly:

Garry Bowman
Direct: 612.624.7345
Cell: 612.875.0154
gbowman@umn.edu

News conferences will take place after each session of competition. Please see page 16 for the location of the Media Workroom/Interview Room.

- Following each national qualifier (Session I & II), selected student-athletes and the coaches of the three advancing teams shall be available.
- Following the team & all-around finals (Session III), representatives from the top three finishing teams and the all-around champion shall be available.
- Following the individual event finals (Session IV), the individual champions shall be available.

Hospitality

Hospitality for coaches, staff and media members will be provided throughout the Championships in the Sports Pavilion Club Room. Please see page 17 for the location of the Club Room. Proper credentials are required to access the hospitality area. Student-athlete hospitality will be located on the east end of the north concourse (see page 16).





Equipment

American Athletic Inc. (AAI) is the official equipment company for the Championships. All equipment used on the competition floor will be supplied by the official equipment company. The podium will not be used for the Championships.

Laundry Services

If requested, laundry services will be provided by the University of Minnesota. Please contact **Equipment Manager Kevin Criter at 612.626.6375** prior to the Championships in order to make the proper arrangements.

Corrals/Designated Team Areas

Corrals will designate the specific team area for each event. Team participants must remain in their designated seating area during the competition. Only competitors performing or preparing to perform (the next competitor) will be exempt. There will be a .3 point deduction on the team score for each violation after an initial warning by the floor managers or a member of the national committee.

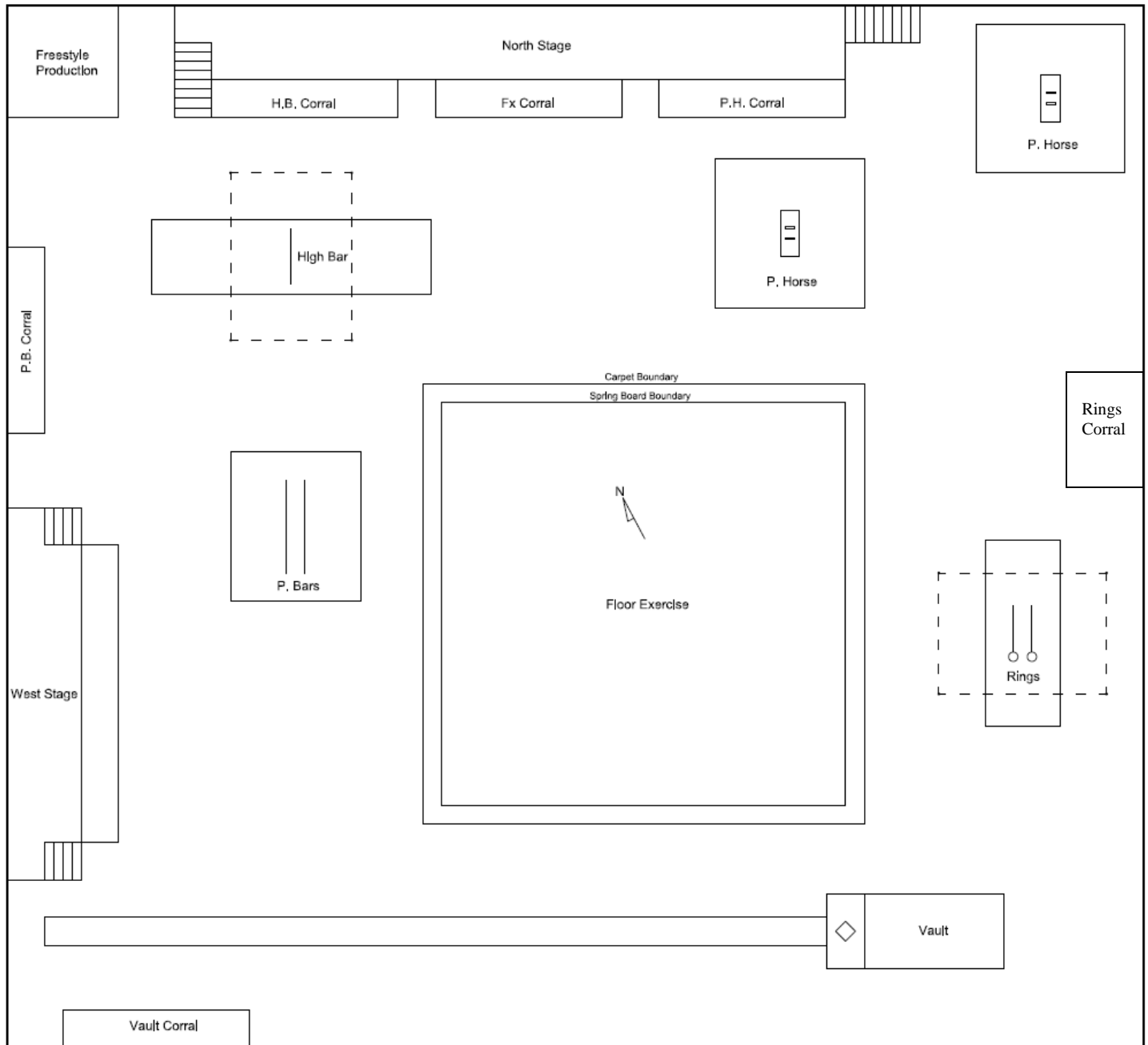
Drug Testing

The Center for Drug Free Sport will conduct random drug testing during selected NCAA Championships in 2008-2009. All student-athletes listed on the official roster are subject to testing. Student-athletes selected to drug test will be notified once competition is complete. Selected participants must report to the drug-testing area immediately following competition or once all media obligations have been met. Please see page 15 for the location of the drug testing area.





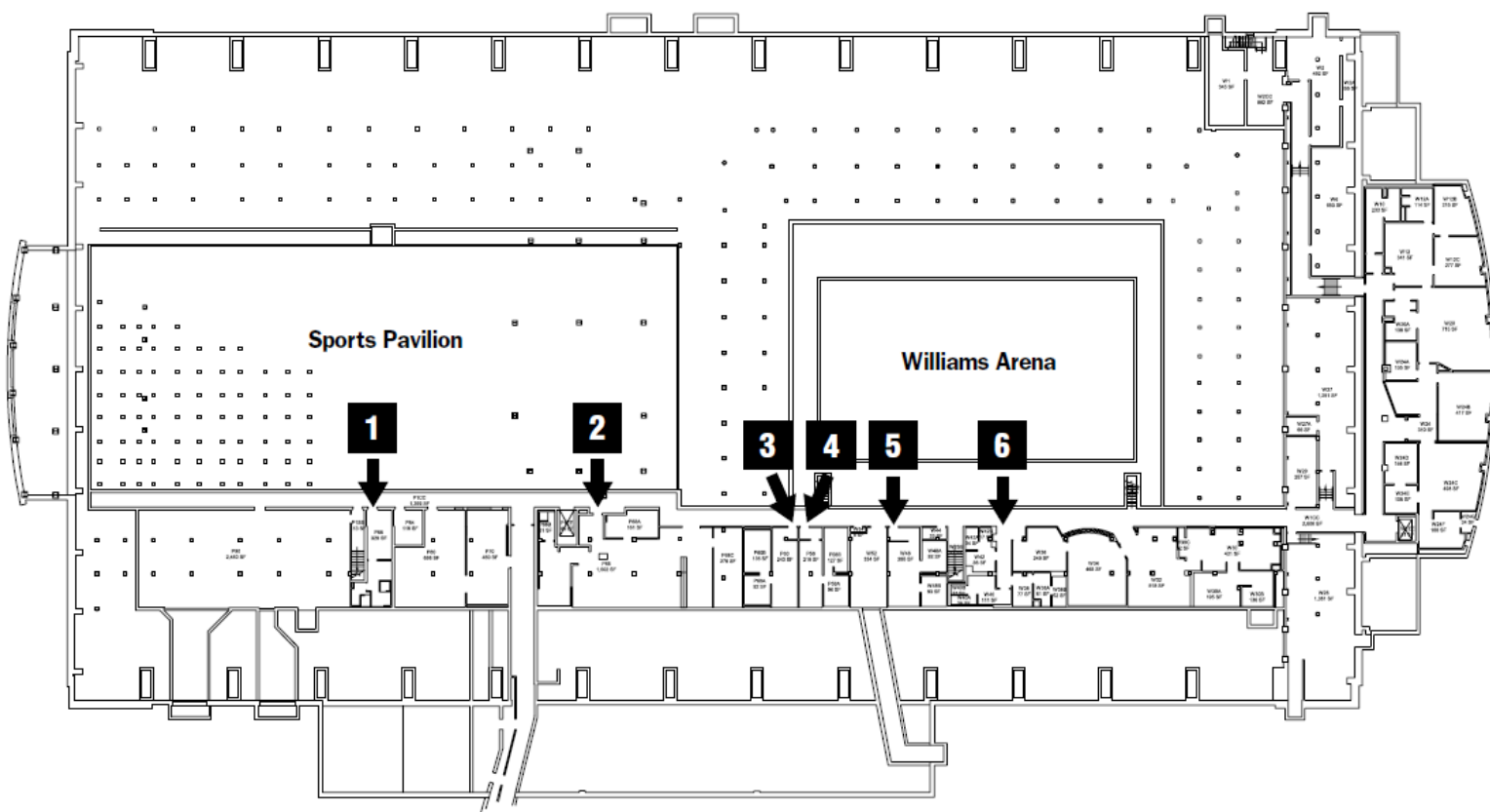
Floor Layout





Sports Pavilion/Williams Arena Maps

2009 NCAA MEN'S GYMNASTICS CHAMPIONSHIP SPORTS PAVILION & WILLIAMS ARENA - LOWER LEVEL MAP

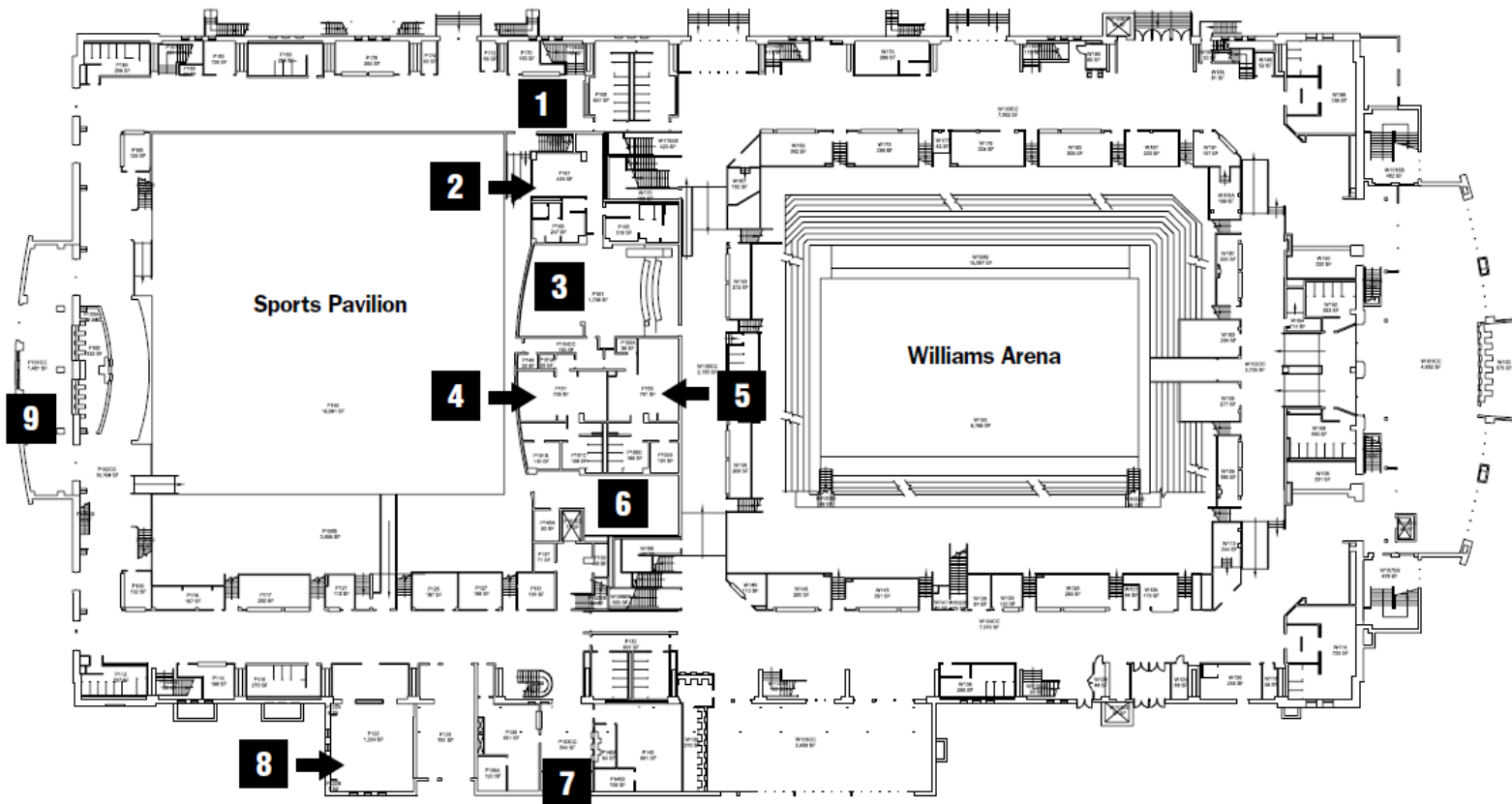


- | | |
|---------------------------------|-----------------|
| 1. Team 3 Locker Room (P88) | 6. Drug Testing |
| 2. Athletic Training Room (P68) | |
| 3. Team 4 Locker Room (P60) | |
| 4. Team 5 Locker Room (P56) | |
| 5. Team 6 Locker Room (W48) | |





2009 NCAA MEN'S GYMNASTICS CHAMPIONSHIP SPORTS PAVILION & WILLIAMS ARENA - MAIN LEVEL MAP

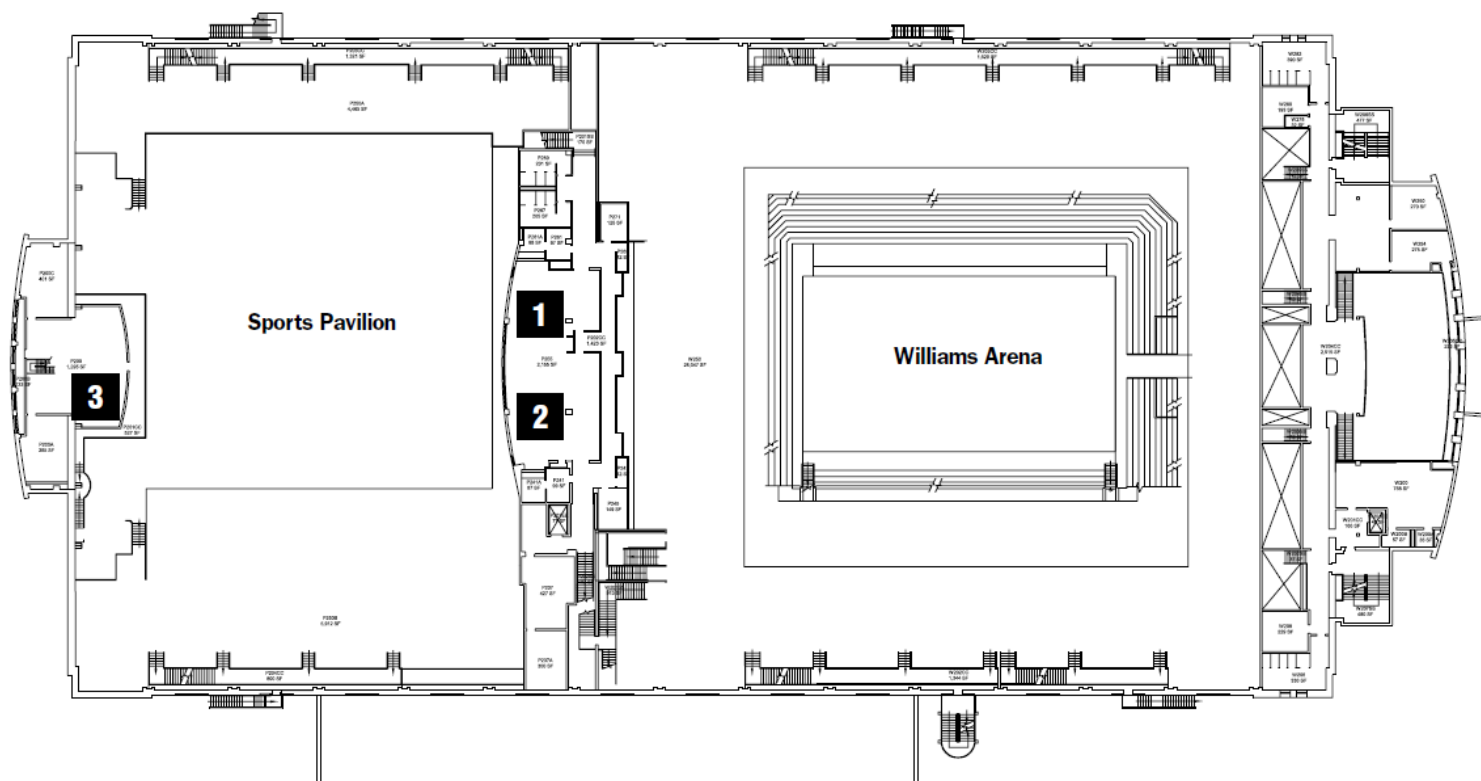


- | | |
|--|---|
| 1. Student-Athlete Hospitality Area | 6. Athletic Medicine (P145) |
| 2. Team 1 Locker Room (P167) | 7. Team/Staff/Media Entrance |
| 3. March-In/Awards Staging Area (P161) | 8. Media Workroom/Interview Room (P122) |
| 4. Gophers Locker Room (P151) | 9. Public Entrance/Ticket Office |
| 5. Team 2 Locker Room (P155) | |





M 2009 NCAA MEN'S GYMNASTICS CHAMPIONSHIP
SPORTS PAVILION & WILLIAMS ARENA - MID LEVEL MAP

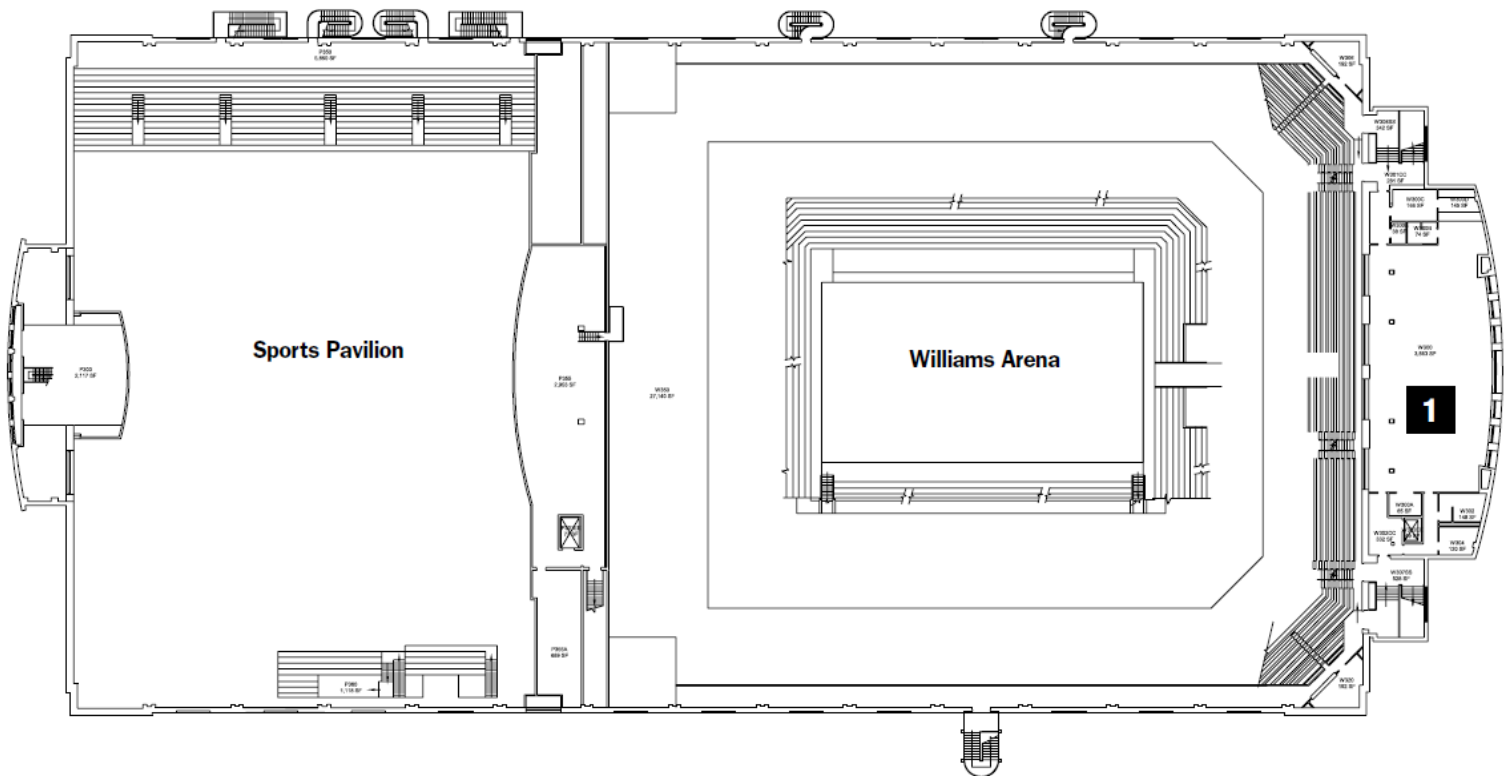


1. Judges Room (P255 North Side)
2. Coaches/Staff/Media Hospitality (P255 South Side)
3. Videotaping Area





M 2009 NCAA MEN'S GYMNASTICS CHAMPIONSHIP
SPORTS PAVILION & WILLIAMS ARENA - UPPER LEVEL MAP



- 1. Williams Arena Club Room
 - ESPN Dining Area

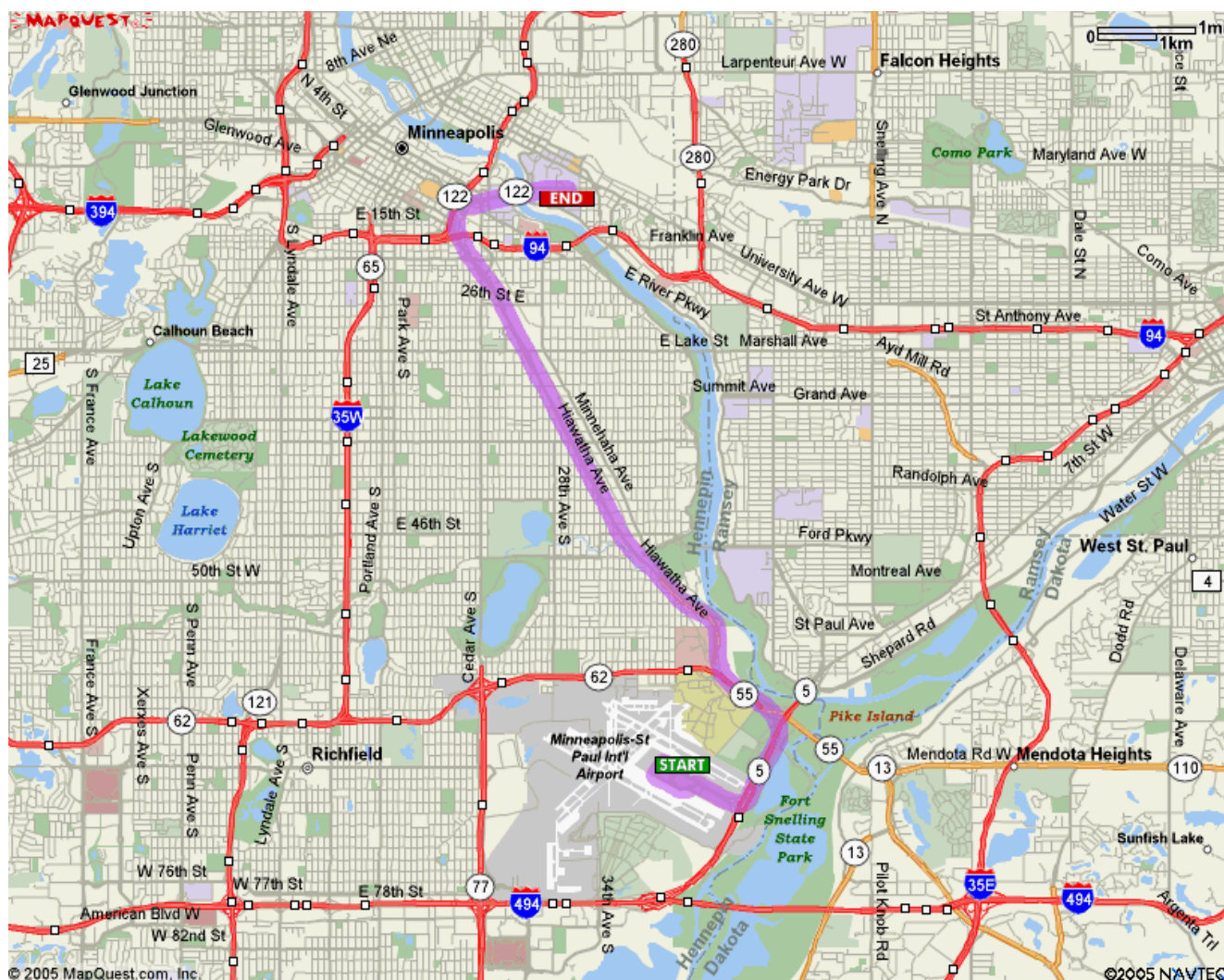




Directions to Radisson University Hotel from the Airport

Directions from the Airport to the Radisson University Hotel

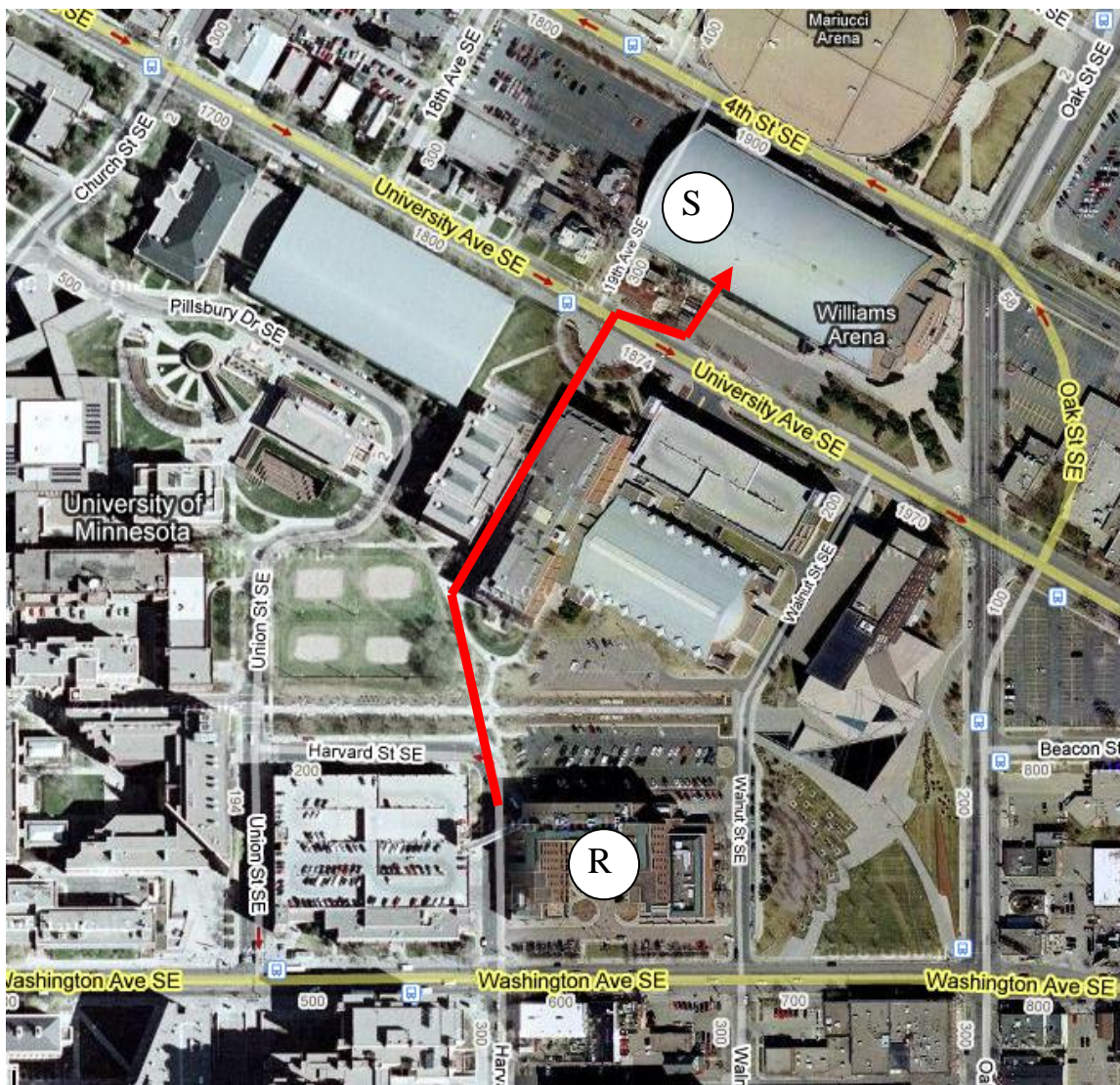
1. Merge onto MN-5 E toward MN-55 / ST PAUL / MINNEAPOLIS.
2. Merge onto MN-55 W toward MN-62 / MINNEAPOLIS.
3. Stay on MN-55 W
4. Take the MN-122 exit toward 3RD ST / U OF M.
5. Merge onto MN-122 E toward U OF M EAST BANK. (becomes Washington Ave.)
6. End at **615 Washington Ave SE.**





Walkway Map

Walkway map from the Radisson University Hotel to the Sports Pavilion



= Radisson University Hotel



= Sports Pavilion

- Exit the Radisson University Hotel through the northwest entrance/exit
- Walk north on the path passing in-between Cooke Hall and the University Rec Center
- Cross University Ave and angle to your right toward the Sports Pavilion Daily Entrance
- Enter the Sports Pavilion through the Team Entrance





Restaurants near the University of Minnesota

Restaurant	Address	Phone Number	Type of Food
Annie's Parlor	313 14 th Ave. SE	612.379.0744	Burgers/Malts
Applebee's	615 Washington Ave. SE	612.378.3740	American
Arby's	1016 Washington Ave. SE	612.331.2757	Fast Food
Big 10	606 Washington Ave. SE	612.378.0467	American Restaurant & Bar
Burrito Loco	418 13 th Ave. SE	612.746.5626	Burritos/Mexican
Bona Vietnamese	802 Washington Ave. SE	612.331.5011	Vietnamese
Bruegger's Bagels	319 14 th Ave. SE	612.623.9522	Bagels/Sandwiches
Bruegger's Bagels	720 Washington Ave. SE	612.378.2145	Bagels/Sandwiches
Chipotle	800 Washington Ave. SE	612.378.7078	Burritos
Erbert & Gerberts	720 Washington Ave.	612.623.9485	Sub Sandwiches
Jimmy John's	404 14 th Ave. SE	612.331.8000	Sub Sandwiches
Library Bar & Grill	1301 4 th Street SE	612.604.1900	American Bar & Grill
Lotus Vietnamese	313 Oak Street SE	612.331.1781	Vietnamese
McDonald's	401 15 th Ave. SE	612.331.6590	Fast Food/Burgers
Noodles & Co.	616 Washington Ave. SE	612.617.0002	Noodle Entrees
Paninos	921 Washington Ave. SE	612.331.4647	Sandwiches (wraps)
Potbelly	326 14 th Ave	612.331.0190	Sub Sandwiches
Qdoba	324 14th Avenue SE	612-379-3100	Mexican Grill
Sally's	712 Washington Ave. SE	612.331.3231	American Bar & Grill
Tony's Diner	1327 4 th St. SE	612.378.4730	American
Stub & Herb's	227 SE Oak Street	612.379.1880	American Bar & Grill
Subway	1412 SE 5 th Street	612.331.6716	Sub Sandwiches
Vescio's Italian Restaurant	406 14 th Ave. SE	612.378.1747	Italian
Village Wok	610 Washington Ave. SE	612.331.9041	Chinese

PIZZA RESTAURANTS

Pizza Restaurant	Address	Phone Number
Campus Pizza	818 Washington Ave. SE	612.378.2417
Davanni's	2500 Riverside Avenue	612.332.5551
Domino's	215 Oak Street SE (U of M)	612.331.3030
Domino's	1113 Hennepin Avenue	612.338.3030
Duffy's Pizza	1308 5 th St. SE	612.623.3833
Green Mill	2626 Hennepin Avenue	612.374.2131
Leaning Tower of Pizza	2505 University Ave. SE	612.331.7474
Pizza Hut	1402 5 th St. SE (U of M)	612.623.0775
Pizza Luce	3200 Lyndale Avenue S.	612.827.5978
Pizza Luce	119 N. 4 th Street	612.333.7359





Movie Theatres

AMC Rosedale 14

850 Rosedale Center
Roseville, MN 55113
(Highway 36 and Snelling Avenue)
Phone: 651-604-9347

Southdale Center AMC 16

400 Southdale Center
Edina, MN 55435
Phone: 952/229-4262
www.southdale.com

Mall of America – AMC 14

60 East Broadway – 4th Floor
Bloomington, MN 55425
Phone: 952/851-0074

Independent Coffman Memorial Union Theater

300 Washington Avenue SE
Minneapolis, MN 55455
(Located on the University of Minnesota Campus)
Phone: 612/626-9513

St. Anthony Main

115 Main Street SE
Minneapolis, MN 55414
Phone: 612/331-4723

Crown Block-E 15

600 Hennepin Avenue
Minneapolis, MN 55402
Phone: 612/338-5900

Shopping Centers

Mall of America

60 East Broadway
Bloomington, MN 55425
Phone: 800/879-3555
www.mallofamerica.com
Directions: Take Interstate 35W South to Interstate 62 East. Take Highway 62 East to Cedar Avenue/Hwy 77 South. Take Highway 77 to Killebrew Street / Lindau Lane (both exit to Mall of America).

Southdale Center

6601 France Avenue
Edina, MN 55435
Phone: 952/925-7885
www.southdale.com
Directions: Take Interstate 35W South to Highway 62 West. Take Highway 62 West to the France Avenue Exit. Take a left onto France Avenue.

Rosedale Center

10 Rosedale Center
Roseville, MN 55113
Phone: 651/633-0872
www.myrosedale.com
Directions: Take Interstate 35W North and merge onto Hwy 36. Take 36 to the Fairview Avenue exit. Take a right onto Fairview Avenue. Rosedale Center is on the right-hand side.

Nicollet Mall

(variety of shops located between 5th Street and 10th Street along Nicollet Mall in downtown Minneapolis)
Includes: Marshall Field's, Saks Fifth Ave., Neiman Marcus, Ralph Lauren, GAP, Banana Republic, etc.





Transportation

MINNEAPOLIS BUS COMPANIES

Jefferson Line	612.359.3400
Laid Law Transit	651.224.2844
Lorenz Bus Service, Inc.	763.784.7196
Minnesota Coaches, Inc.	651.437.9648
Northfield Lines, Inc.	507.645.5267
Richfield Bus Co.	952.881.1111
Voigt's Bus Service	800.468.6448

MINNEAPOLIS TAXI SERVICES

Airport Taxi	952.928.0000 612.721.0000
Green & White Taxi	612.522.2222

RENTAL CAR SERVICES

Avis	800.831.2847 612.726.5220
Budget	800.527.0700 612.332.5218
Hertz	800.654.3131 651.698.9585
National	800.227.7368 612.727.2388





Team Travel Form

Institution: _____

Arrival Date and Time: _____

Mode of Transportation: _____ Flight # (if applicable): _____

Specific practice time desired (2:00 – 7:30 p.m.) on Monday, April 13: _____

Specific practice time desired (9:00 a.m. – 8:00 p.m.) on Tuesday, April 14: _____

** Practice times must be confirmed with Mike Dale, 612.625.3007 or dale0099@umn.edu, prior to arrival

Travel Coordinator _____

Cell Phone: _____

Sports Medicine Contact: _____

Cell Phone: _____

Head Coach: _____

Cell Phone: _____

Administrator (if traveling): _____

Cell Phone: _____

**Please complete travel form and return to Tyson Bjorklund, bjor0264@umn.edu
or 612.626.7859 (fax), by 5:00 p.m. (CST) on Wednesday, April 8.**





Official Travel Party

Team: _____

Participating Gymnasts	Credentialed Non-Participants (Coaches, Managers, SID, Athletic trainer, etc.)
1.	1.
2.	2.
3.	3.
4.	4.
5.	5.
6.	6.
7.	
8.	
9.	Administrator(s)
10.	1.
11.	2.
12.	

Floor Access Only (only allowed during open-warm and must be accompanied by a ticket)

1.	2.
3.	4.
5.	6.

Please complete official travel party form and return to Tyson Bjorklund, bjor0264@umn.edu or 612.626.7859 (fax), by 5:00 p.m. (CST) on Wednesday, April 8.





March-In Order Form

Team: _____

**Please list in alphabetical order	Pronunciation Key
1.	
2.	
3.	
4.	
5.	
6.	
7.	
8.	
9.	
10.	
11.	
12.	
Head Coach	
1.	
Assistant Coaches	
1.	
2.	
3.	

Please complete march-in form and return to Tyson Bjorklund, bjor0264@umn.edu or 612.626.7859 (fax), by 5:00 p.m. (CST) on Wednesday, April 8.





Banquet Reservation Form

The 2009 NCAA National Collegiate Men's Gymnastics Championships Banquet, which includes the Nissen-Emery and CGA award presentation(s), will take place on Wednesday, April 15 at 6:30 p.m. in the Radisson University Hotel Ballroom. The Radisson University is located at 615 Washington Avenue S.E., Minneapolis, MN 55414

Please list the names of those in your official travel party planning to attend (below). The cost of the banquet is \$25 per person. **All RSVP's are due by 5:00 p.m. (CST) on Wednesday, April 8.**

Payment will be collected at the Pre-Championship Meeting on Wednesday morning, or you may send payment to:

Bierman Field Athletic Building
c/o Tyson Bjorklund
516 15th Ave SE
Minneapolis, MN 55126

*** Make checks payable to the University of Minnesota*

For friends and family planning to attend the banquet, please have them RSVP to Tyson Bjorklund (bjor0264@umn.edu or 612-626-0994) no later than Wednesday, April 8th. *** There is limited seating available so we encourage family/friends to RSVP ASAP.*

Names:

1.
2.
3.
4.
5.
6.
7.
8.
9.
10.
11.
12.
13.
14.
15.
16.
17.
18.
19.
20.

Please complete banquet form and return to Tyson Bjorklund, bjor0264@umn.edu or 612.626.7859 (fax), by 5:00 p.m. (CST) on Wednesday, April 8.

